



Demo Day with Les Thorne

Our May meeting took place on a beautiful sunny day when we welcomed Les Thorne as our demonstrator. Les has been to the club before but we have had a lot of new members since then and Les covered some different projects.

After the notices, Les began by telling us a little about himself and his work. He does a lot of production work which can be rather mundane but enjoys turning pieces which allow him to be creative and have fun. His projects for the day come into the latter category. He also told us that if you wish to sell work at Craft fairs, natural wood items sell better than coloured work.

The first project for the demonstration was a box which he textured and coloured. Les began with an ash blank which is a good medium for texturing and colouring. The blank was mounted between centres roughed down and a spigot turned on each end for mounting in the chuck. Once fitted in the chuck, Les shaped the profile of the box and parted in between the base and the top leaving a registration mark on the lid for reference when hollowing it to fit the base. The next step was the hollowing. Les gave us some tips on gouge angles for this using a magnetic pencil holder with the pencil pointing to the correct clock position for the task in hand. Les also demonstrated the use of his multi tool which he had among items for sale. When hollowing the lid, Les worked up to the register mark then proceeded a very little at a time until the lid and base just fitted together.

With the box parts together on the lathe, Les then used an Arbortech tool to add some texture. The join between lid and base was accentuated by turning away a slight groove. This made the piece easy on the eye if the texturing was not lined up accurately. Les then turned away a little of the texturing on the centre of the lid making a button and a bead. The piece was sanded lightly at this stage and then Les added some colours using an airbrush. The advantage of the airbrush is that colour can be built up gradually but you could use a paintbrush which would result in a stronger, flatter colour. The colour medium used was spirit stain which is light fast. Les finished the piece with acrylic spray lacquer then reversed the base onto a jam chuck to finish the bottom. This completed an entertaining morning session.



We had our usual break for the raffle and lunch after which Les critiqued members' work. It is always helpful to know where we are perhaps going wrong and how we can improve our work, whether by design or technique.

Left, Les Thorne adding texture to his box with the arbortech tool.

Right, the finished box



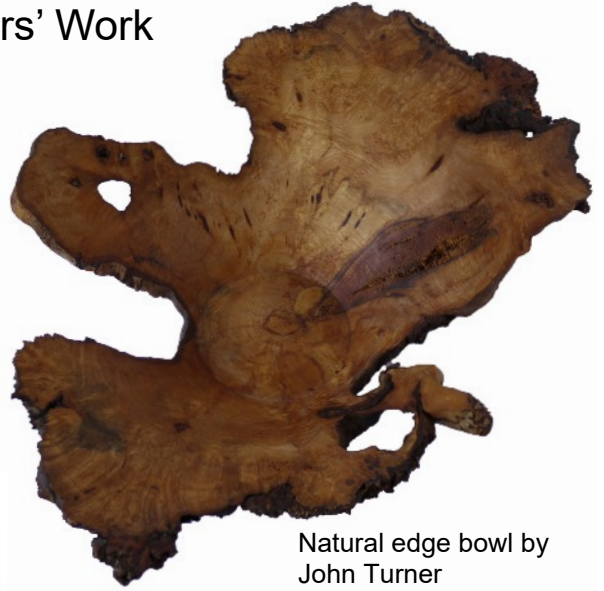
A Selection of Members' Work



Platter with coloured rim by Nick Benson



Clock in burrwood by Lynn Chambers



Natural edge bowl by John Turner



Bowl turned by Malcolm Page.



Box decorated with pyrography and acrylics by Sandra Day.

Les began the afternoon demonstration with a natural edge thinly turned bowl. Using green wood between centres, Les roughed out with a bowl gouge as there was a knot in the piece. He prepared it for mounting in the chuck and started shaping the outside to reduce the bulk. However, Les then turned the inside to show us that it is easier than doing it last. However, to get a good shape it is best to use a template. He then set up a light to shine through the wall to help to gauge the thickness. He gave the vase shape a stem with a bead and explained that the transition between a bowl and the stem is important, whether a sharp junction or smooth flowing shape. Les turned a thin base on the work before parting it off. A little area of the natural edge had broken away. A tip for blending this in is to sand carefully and use a brown felt pen to add colour to the damaged edge.. Finally Les turned a candlestick from oak marrying the stem to the base. Les discussed the use of baize on the base of items, a practice frowned on by many woodturners. As long as it is there for surface protection rather than covering a chucking recess or screw holes, then it is quite acceptable. As time was running out, Les demonstrated a scorching technique on the candlestick then used a bronzing brush over it, after which it could be enhanced by applying liming wax or a similar product.

Thankyou Anne and Roger Smith for running the raffle, Brian Rowson and Team for managing the audio visual equipment and all those who helped out with setting up and clearing up.

Reminder for this Month's Meeting

June 11th 10.00am

Andy Coates demonstrating

Competition Reminder.

All classes Subject - a musical instrument
See February newsletter for full details.

Founders' Cup Any piece showing innovation

Bill Thurlow Cup Partners' choice

Next Month's Meeting

July 16th 10.00am

Summer Competition and Social

Please bring your entries, partners/friends and contributions towards the buffet lunch.
Barbecued meat will be provided.

Chairman	Maggie Wright
Vice Chairman and	
Competition Secretary	Peter Castle
Secretary	Anne Smith
Treasurer	John Turner
Events organiser	Greg Collett
Librarian	David Spice
Newsletter editor	Sandra Day
A-V co-ordinator	Brian Rowson

www.wealdenwoodturners.org.uk