

The March meeting began in the morning with a critique. There was a good selection of work on show from members of all levels.

Peter Castle ran the proceedings and a general discussion about each piece was held. We looked at elements such as form and finish.

This was a useful exercise, particularly for the novices amongst us, in order to see what we are aiming for.

It was interesting to see what a difference a small adjustment, perhaps a little more curve here or there, or slightly different proportions, might make.

We learnt about the golden ratio of 1.618, a geometric rule going back to ancient times. It occurs in nature and may be applied to many aspects of design.

It is said to produce a shape which is aesthetically pleasing.



A good selection of pieces for the critique

To use this rule in practice, we tend to divide our design into thirds. For example, the lid of a box might be one third of the overall height of the box, or the width at the top of a hollow form might be one third of the width at the widest part.

When starting out in woodturning, we must consider these things as well as learning how to handle our tools. Attention to design can make the difference between good work and masterpieces.

A selection of pieces from the critique

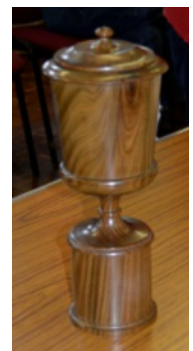


Segmented work by Lynn Chambers



A little natural edge bowl by Ken Allison

One of Richard Hasleden's intricate pieces



A piece by Mike Knight

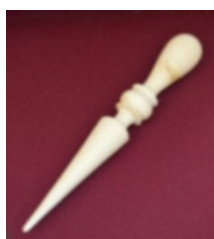
After lunch we were treated to a demonstration by our club president, Allan Beecham.

Before he began turning, Allan had to make an improvised stand as the club lathe was too high for him.

New members, especially those who have not yet got a lathe, may not realise that the lathe needs to be set up to suit the individual using it.

When standing in front of the lathe with the left arm bent, the elbow should be in line with the centre. This height gives a comfortable working posture, an important consideration if you want to get the best out of your turning.

Picture right. Allan on his improvised stand adjusting the lathe speed with Maggie Wright, before starting to turn.



Allan's dibber

Allan showed us a dibber which he had turned as a pattern. He then demonstrated the turning processes involved, concentrating particularly on using the skew chisel. The professional makes it look so easy! Then it was our turn!

Once again it was good to see members having a go, for some their first experience of turning.

Studies in concentration



Maggie Wright giving tuition to Peter Rigby



Charlie Turner

Thanks are due to Allan for the demonstration and to all those more experienced members who gave guidance at the lathes. Thanks also to those who helped set up and clear away.

Hon President	Allan Beecham
Chairman	Maggie Wright
Vice Chairman	Peter Castle
Secretary	Anne Smith
Treasurer	John Turner
Events organiser	Allan Beecham
Librarian	David Spice
Newsletter editor	Sandra Day
www.wealdenwoodturners.org.uk	

The Association of Woodturners of Great Britain International Seminar

This event will be held at Loughborough University from 7-9th August. More details next month or see the Revolutions magazine and website for booking.

Summer Competition

Novice Mortar and Pestle

Intermediate A matching pair of rice bowls

Advanced A string activated toy (ie not just a toy on or pulled along by string)

Allan Beecham Cup. Open class for innovation in shape and design

Bill Thurlow Cup Partners choice

The competition date is July 19th so plenty of time to get busy with your ideas and tools. Let's have lots of entries.

Next Month's Meeting

May 10th.

Hands on