

CUTTING EDGE

November 2014



*An all-round
good egg*



"Don't take your cap off, you are demonstrating". Poor old Allan, he hadn't even got in the door when he was told that he had to perform. Spheres were on the menu and who better to turn a few than him.

With no preparation and no tools of his own he set to with gusto and ran through the basics of making balls for whatever purpose.

Starting between centres he then went on to use a cup chuck to finish it off with the Holtzapffel method. This amounted to regularly rotating the ball, in the cup chuck, with a pencil line drawn around the circumference just inside the highest point. Gradually the irregularities were removed, it takes 32 'moves' if I recall correctly.

We then all set to on the lathes and produced our own although I think you could see the difference between ours and Allan's. Let us be kind and say they were miniature versions of green bowls with a bias built in.

Maggie wins again

On the 28th of October The Worshipful company of Turners held their biennial competitions. Maggie, for a change, made a pair of goblets to enter in 'The Master's Competition' which this year combined both 'plain' turning (what a cheek) and ornamental turning (let's call it mechanical).



Lady Fiona Woolf presents
Maggie with her prize

*Gissa
Job!!*

This meant that Maggie was up against the likes of John Edwards and Paul Coker who normally walk away with all the prizes. Not so this year, guess who came first? (£1250) Well done Maggie.

Not only that, Maggie had two commendations in The Felix Levy Open Competition for a whimsy and the cocobolo tazza that came 2nd in our Summer Competition. That's not the end of our illustrious leader's achievements, one of the commendations, the tazza sold for £350.

No doubt the member who beat the tazza in the summer is now wishing they had entered!!

Members' Work



**Extra-ordinary General Meeting
to be held Sunday 14th December at 10.30am**

There will be one proposal which will be put to the vote:-

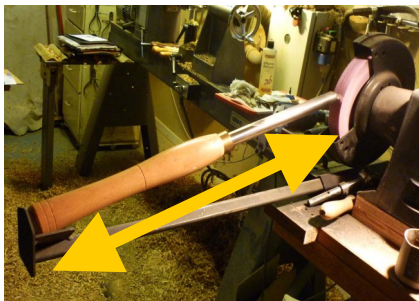
Paragraph 3 of the Constitution -

Delete - 'The club is the responsibility of the committee which shall consist of

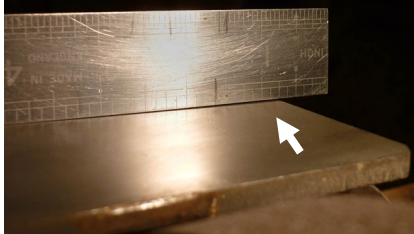
Add - 'The committee shall consist of

In for a penny..... Caveat emptor

Les Thorne recently mentioned that the Oneway Sharpening jig caters for tools greater in size than 5/8" (*ed.*—which is the limit of the Sorby unit). Great, so I bought one. Wow, my wheels need a lot more dressing and, boy, does the jig jump up and down! When you think about it, it is obvious - if you have an excessive overhang beyond the tool-rest the tool becomes unstable. Same here, with such an overhang I find it difficult to grind smoothly without 'blueing' carbon tools. Perhaps I am missing something, anybody got the answer? Whereas the Sorby had a maximum overhang of 2" the Oneway bowl jig has the full length of the tool and with a short bevel you are approaching the danger point, I would suggest, as it is so low on the wheel (see photo).



Also, the platform has a hump in the middle



Hon. President	Allan Beecham
Chairman	Maggie Wright
Treasurer	John Turner
Secretary	Kevin Head
VC & Newsletter	Peter Castle
Events Organiser	Dave Rogers
Comp. Secretary	Mick Briggs
Librarian	David Spice
www.wealdenwoodturners.org.uk	

Date of next Meeting:
10 am Sunday 14th December
Competitions and Social